



# Technical Specification

## T Series Granulators



Tel (262) 641-8600 • Fax (262) 641-8653 • www.cumberland-plastics.com • Bulletin: CG5-505.1 • Effective: June 15, 2010 • Supersedes: CG5-505

### T Series Granulators

#### Application:

The T Series Granulators are compact granulators for inline processing of thermoformed scrap, including formed parts in the web with optional paddle rolls. The T Series Granulators are ideal for skeletal scrap with and without formed parts, expanded polystyrene, high impact polystyrene, HDPE, ABS, PET, and CPET. They can be positioned under or in front of the trim process.

#### Features:

Model	Throat Size	Cutting Circle Diameter	Throughput	Approximate Weight
30T	8" x 30" (203 x 762 mm)	8" (203 mm)	800-1000 lbs./hr. (363-454 kg.)	2,300 lbs. (1045 kg.)
36T	8" x 36" (203 x 914 mm)	7.9" (200 mm)	800-1200 lbs./hr. (363-545 kg.)	2,600 lbs. (1181 kg.)
56T	8" x 56" (203 x 1422 mm)	7.9" (200 mm)	1000-1500 lbs./hr. (454-681 kg.)	2,900 lbs. (1305 kg.)

#### Benefits:

- Infeed design enables the processing of flat thermoforming skeleton and/or formed parts.
- Infeed assembly pivots open via gas springs for fast efficient access.
- Cutting chamber is machined and bolted for additional ease of cleaning.
- The screen and cradle's pivoting drop down design allows fast, convenient removal.
- Cumberland-manufactured knives are HCHC (D-2) steel, specially heat treated with our proprietary process for exceptionally long life, so knife maintenance and replacement costs are minimized.
- Hinged hopper tilts out of the way for unobstructed access.
- Screen is reversible for long life.
- Solid steel cutting chamber and bed knife blocks, doweled and bolted end plates for maximum strength. Castings are not used.
- Benefits are low noise, large positive bites, rapid ingestion and smooth, slicing action.

#### Specifications:

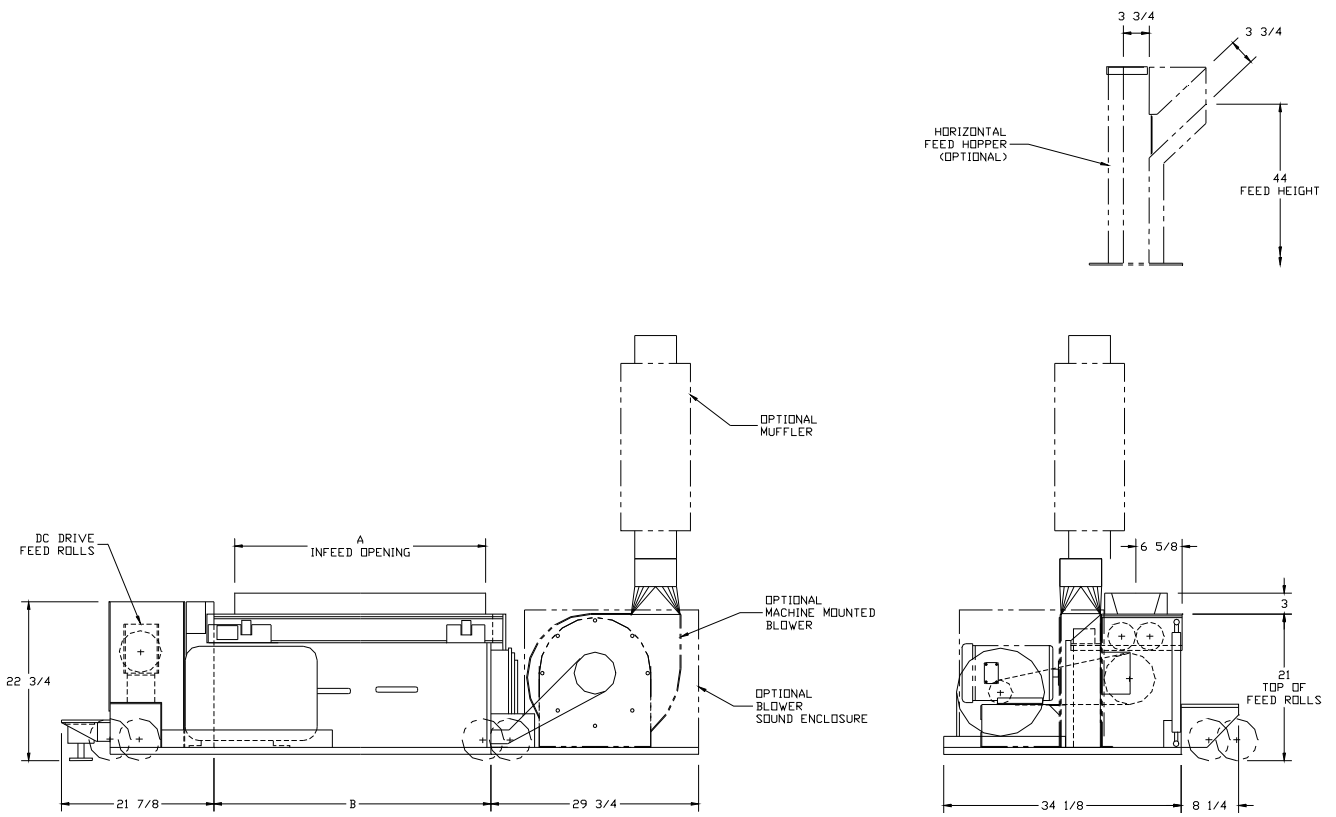
	Standard	Standard Options
Infeed	Feed Rolls – Poly smooth	Paddle Rolls Horizontal infeed hopper
Cutting Chamber	2-Bed knives, drop down cradle	
Rotor	3-knife Chevron (30T and 56T) Open 3-knife slant cut, scooped (36T)	
Rotor Knives	HCHC, keen edge	
Bed Knives	HCHC, 2-edge (reversible)	
Screen	5/16", 2-piece reversible (30T and 56T) 5/16", 1-piece reversible (36T)	1/4", 3/8", and larger
Base	Low profile caster	
Discharge	6" Airveyor	
Motor	5 HP (30T), 7 1/2 HP (36T and 56T) TEFC, 1800 rpm, 3/60/230/460	7 1/2 HP, 10 HP (30T) 10 HP, 15 HP, 20 HP (36T and 56T)
Feed Roll Motor	3/4 HP, D.C.	1 HP, D.C.
Drive Parts	V-belt	
Electrical Components	NEMA 12 with safety interlocks	
Controls	230 or 460 volt, 115 volt, NEMA 12	
Labels	Safety/caution/operation	French/Spanish
Accessories		#6 Blower, 5 HP, Machine or Floor Mounted, #8 Separator, #8 Stand, Machine Sound Enclosure

— See Page 2 For T Series Drawings —



Cumberland Engineering LLC • 2900 S. 160<sup>th</sup> Street • New Berlin, WI 53151

# Cumberland T Series Granulators



## Dimensions

Model	A	B
30T	30" (762 mm)	33 $\frac{3}{4}$ " (857.3 mm)
36T	36" (914.4 mm)	39 $\frac{3}{4}$ " (1009.7 mm)
56T	56" (1422.4 mm)	59 $\frac{3}{4}$ " (1517.7 mm)