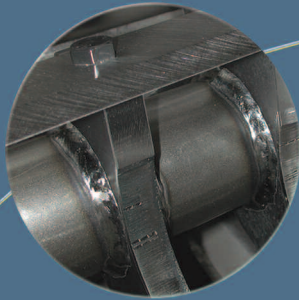




20 Series Sprue and Runner Granulators

The 3 knife open slant cut rotor with scooped wings provide positive feed of bulky parts and improve airflow for cooler operation



Optional bolt on feed chutes to optimize feed of granulator. Feed Methods include: robot, conveyor, and profile feed chutes



Swing down clamp with hand knob provides quick and easy machine access



Fully removable screen cradle and bin allow for total access during cleaning



20 Series Offers Compact Granulation

The 20 Series granulators are ideal for reject components from the injection, blow molding, and extrusion processes. The compact design makes them easily movable and the

sound enclosure controls noise and permits access. Engineered for hand feed, robot feed or conveyor feed, these low speed granulators are packed full of standard features.

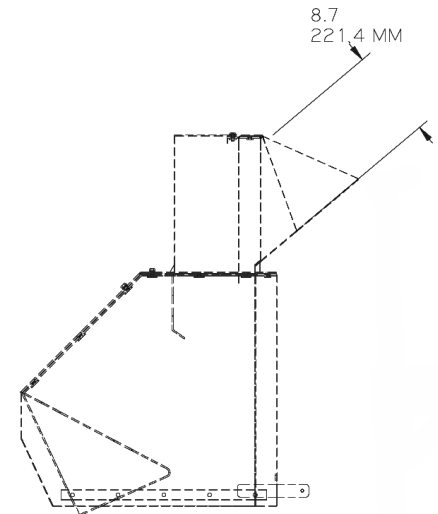
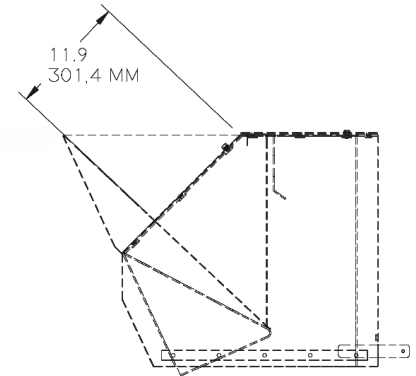
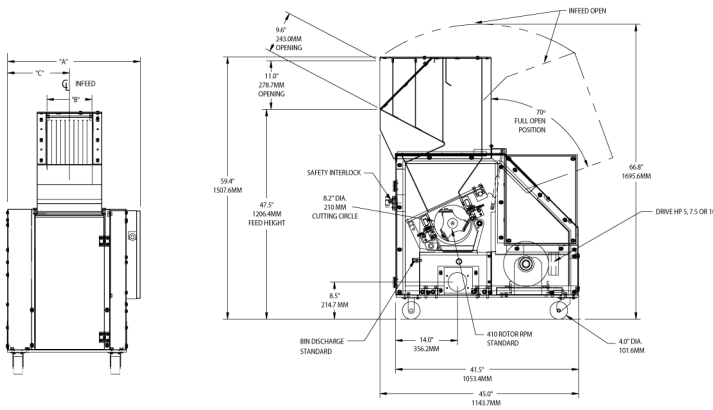
20 Series Sprue and Runner Granulators

Standard Features

- Pivoting hopper, drop-down removable screen cradle and machined, bolted cutting chamber simplifies cleaning and maintenance
- Low profile, sound-attenuated infeed system for robot, hand or conveyor feed applications
- HCHC knives manufactured in-house utilizing Cumberland's proprietary process for heat-treating ensure durability and long life
- Oversized solid flywheel

Options

- Motor: 5.5 to 7.5 kW (7.5 to 10 HP) TEFC motors
- Discharge: 32, 38, 51, or 64 mm (1.25", 1.5", 2" or 2.5") vacuum take-off
- Knives: D2 components and wear-resistant package for abrasive applications
- Modular feed chutes



Optional Feed Chute Drawings

Specifications			
Model	2025	2035	2045
Cutting Circle	210mm diameter (8.2")		
Avg Throughput, kg/hr (lbs/hr)	56 (123)	78 (172)	100 (221)
Cutting Chamber	203x254 (8"x10")	203x355 (8"x14")	203x457 (8"x18")
Rotor Knives	3-knife open-scooped with rotating end discs		
Discharge	Manual bin standard		
Motor	3.75 kW (5HP) TEFC standard		
Base	Full machine sound enclosure with casters		
Electrical Components	Start/stop button, with complete safety interlocks		
Controls	IP-55 CE Standard		
Feed Height (manual chute)	1206mm (47.5")		
Feed Height (front robot/conveyor chute)	1502mm (59.1")		
Feed Height (rear robot/conveyor chute)	1742mm (68.6")		
Overall Height (manual chute model)	1507mm (59.4")		
Overall Length	1144mm (45.0")		
Overall Width	770mm (30.3")	871mm (34.3")	973mm (38.3")
Weight	553 kg	635 kg	730 kg

CUMBERLAND CORPORATE HEADQUARTERS

CHINA
109 Xinqu Road SIP
Suzhou, China 215126
TEL: +(86) 512 8717 1919
FAX: +(86) 512 8717 1916

UNITED STATES
2900 S. 160th Street
New Berlin, WI 53151
TEL: +1(262) 641-8600
FAX: +1(262) 641-8653

www.cumberlandeurope.com
Email: cumberlandeurope@corpemail.com



ALL DATA SUBJECT TO CHANGE WITHOUT NOTICE

©2010 Cumberland

Bulletin CG2-195.1